

Subject: Crankshaft and camshaft position (CKP and CMP) sensor circuit diagrams for 1994–2003 Lexus OBD-II vehicles

Source: Lexus service manuals

Use an oscilloscope or the Vantage® power graphing meter to check the CKP sensor and CMP sensor signal waveforms with the engine cranking or running at idle. Good CKP and CMP signal waveforms are shown in [Figure TA117-1](#).

G and NE Signal Waveforms

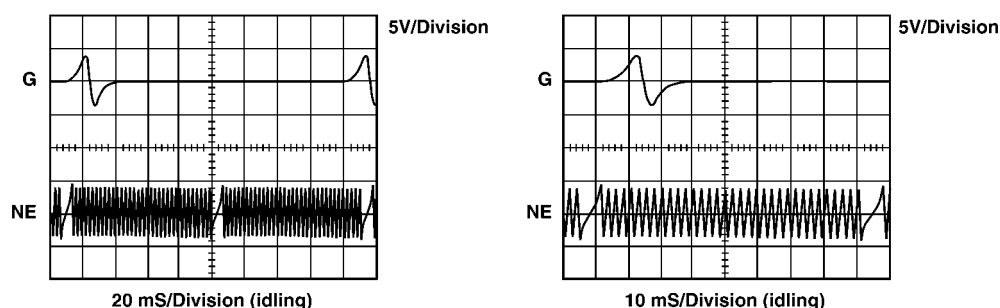


Figure TA117-1

Use the table below to locate the CKP and CMP circuit diagram for the vehicle being tested:

Table TA117-1 (part 1 of 2)

MODEL	YEAR	ENGINE	GO TO
ES300	1994–96	1MZ-FE	Figure TA117-2
	1997	1MZ-FE	Figure TA117-3
	1998	1MZ-FE	Figure TA117-4
	1999–2001	1MZ-FE	Figure TA117-5
	2002–03	1MZ-FE	Figure TA117-24
GS300	1996–97	2JZ-GE	Figure TA117-6
	1998–2001	2JZ-GE	Figure TA117-7
	2002–03	2JZ-GE	Figure TA117-25
GS400	1998–2000	1UZ-FE	Figure TA117-7
GS430	2001–02	3UZ-FE	Figure TA117-20
	2003	3UZ-FE	Figure TA117-33
GX470	2003	2UZ-FE	Figure TA117-32
IS300	2001	2JZ-GE	Figure TA117-21
	2002–03	2JZ-GE	Figure TA117-26
LS400	1995–97	1UZ-FE	Figure TA117-8
	1998–2000	1UZ-FE	Figure TA117-9
LS430	2001–02	3UZ-FE	Figure TA117-22
	2003	3UZ-FE	Figure TA117-31

Table TA117-1 (part 2 of 2)

MODEL	YEAR	ENGINE	GO TO
LX450	1996–97	1FZ-FE	Figure TA117-10
LX470	1998–99	2UZ-FE	Figure TA117-11
	2001	2UZ-FE	Figure TA117-23
	2002	2UZ-FE	Figure TA117-27
	2003	2UZ-FE	Figure TA117-30
RX300	1999	1MZ-FE	Figure TA117-12
	2000	1MZ-FE	Figure TA117-17
	2001–02	1MZ-FE	Figure TA117-19
	2003	1MZ-FE	Figure TA117-29
SC300	1996	2JZ-GE	Figure TA117-13
	1997	2JZ-GE	Figure TA117-14
	1998–2000	2JZ-GE	Figure TA117-15
SC400	1996–97	1UZ-FE	Figure TA117-16
	1998–2000	1UZ-FE	Figure TA117-18
SC430	2002–03	3UZ-FE	Figure TA117-28

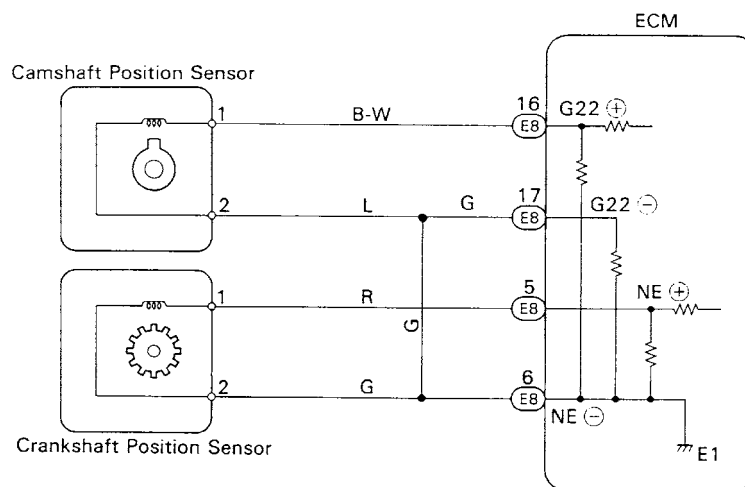


Figure TA117-2 See table for applications

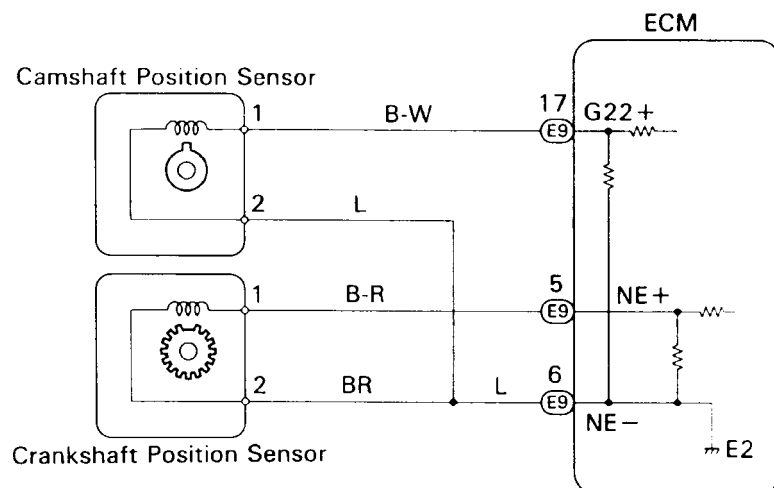


Figure TA117-3 See table for applications

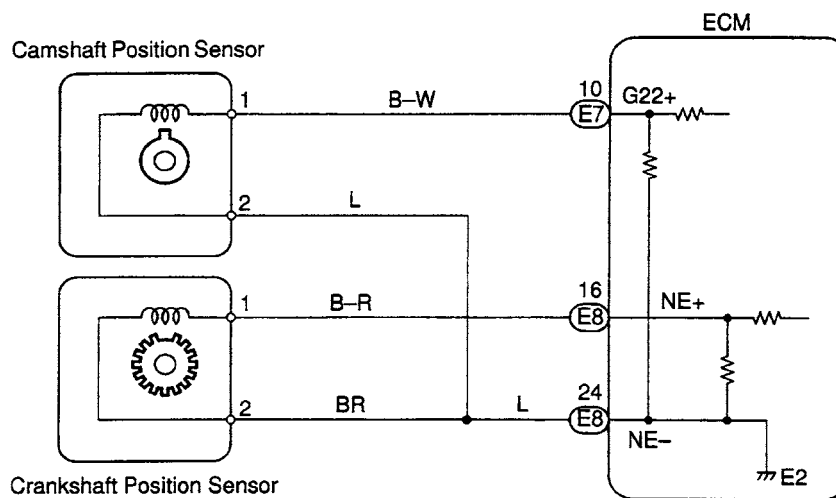


Figure TA117-4 See table for applications

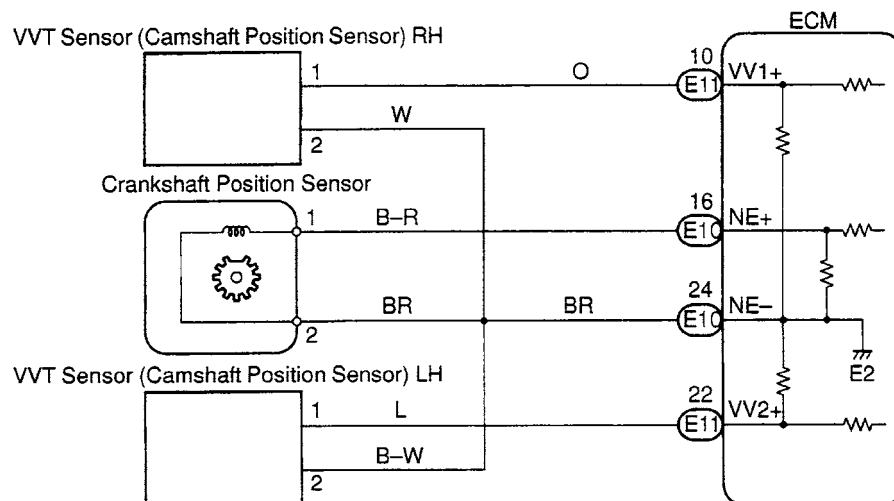


Figure TA117-5 See table for applications

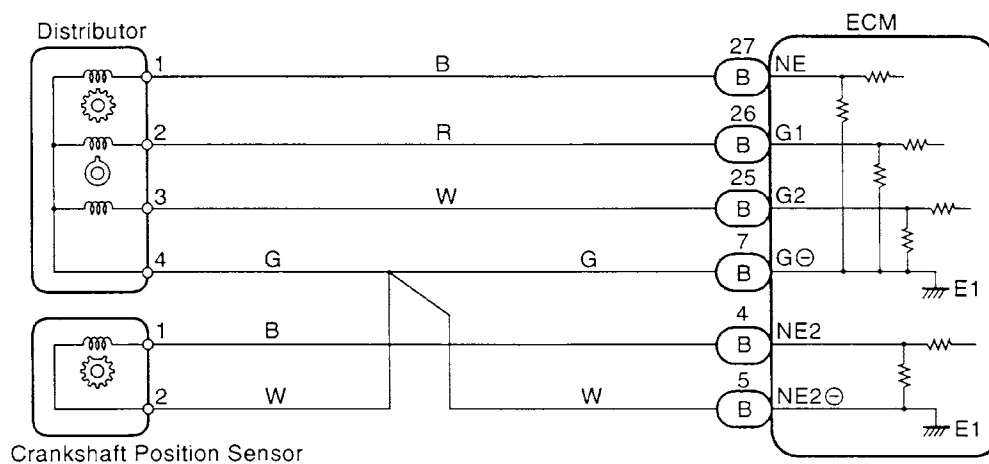


Figure TA117-6 See table for applications

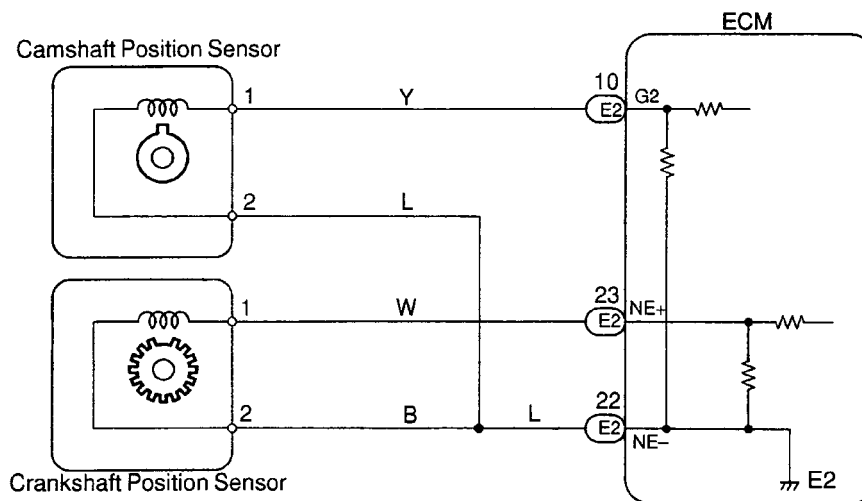


Figure TA117-7 See table for applications

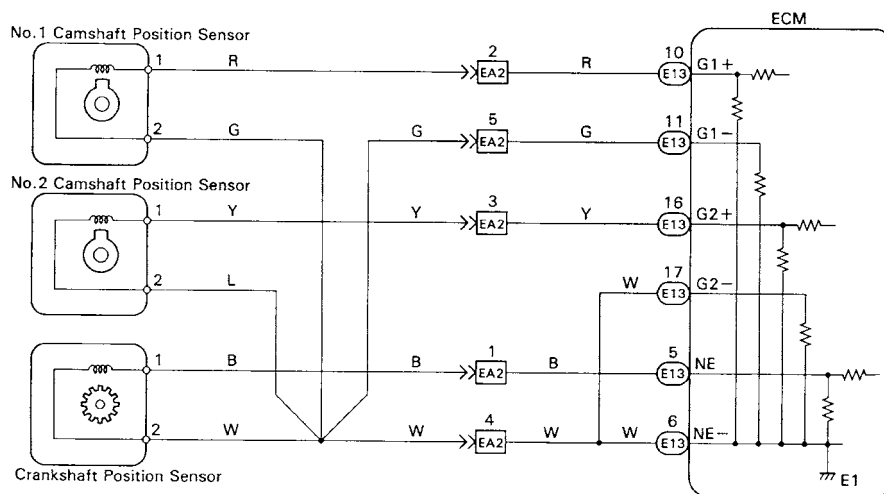


Figure TA117-8 See table for applications

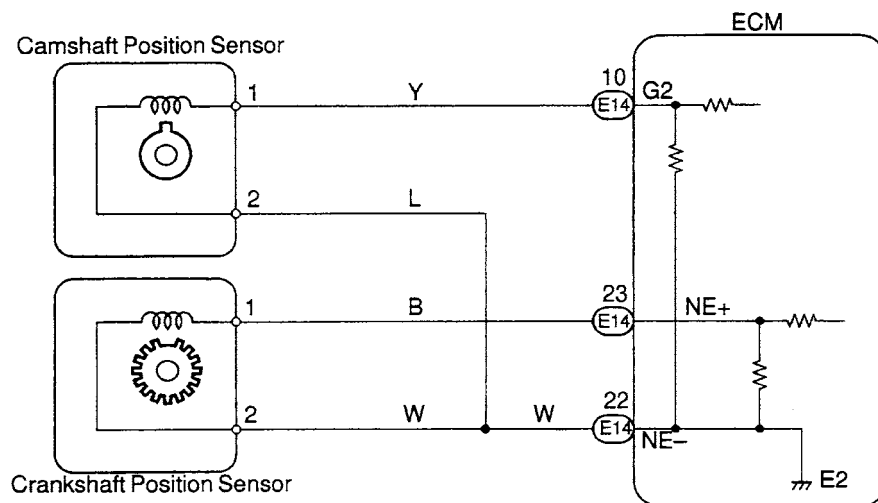


Figure TA117-9 See table for applications

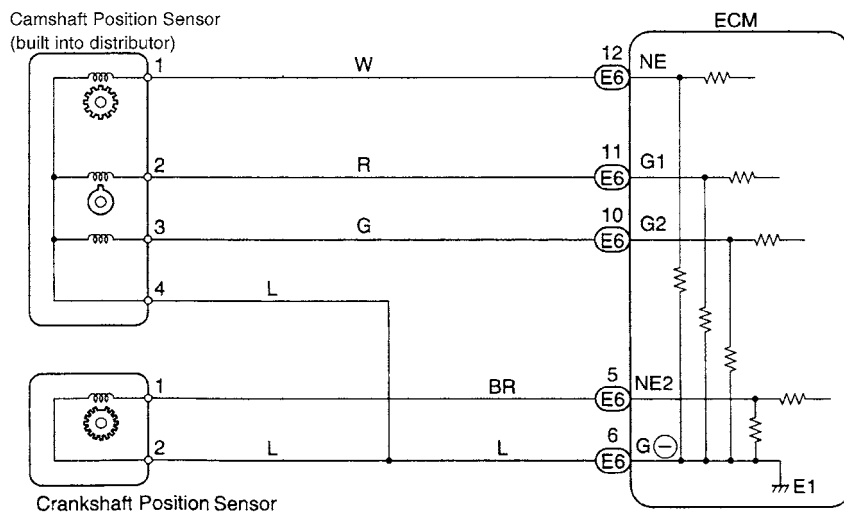


Figure TA117-10 See table for applications

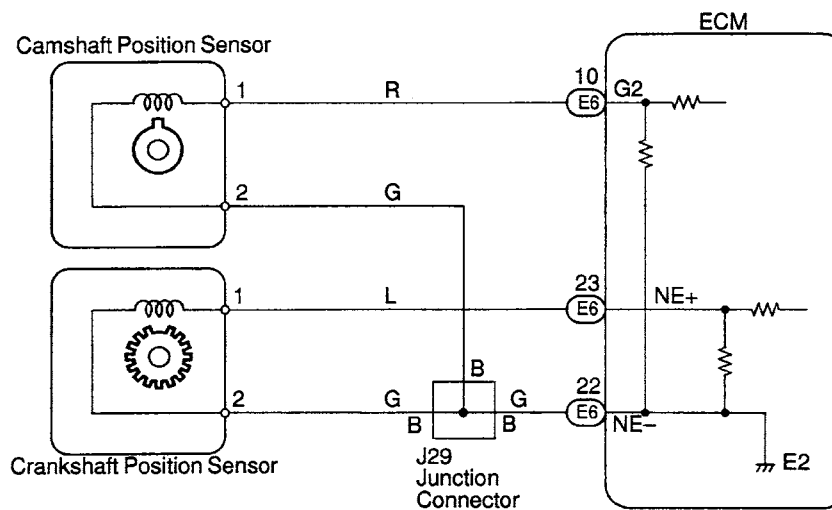


Figure TA117-11 See table for applications

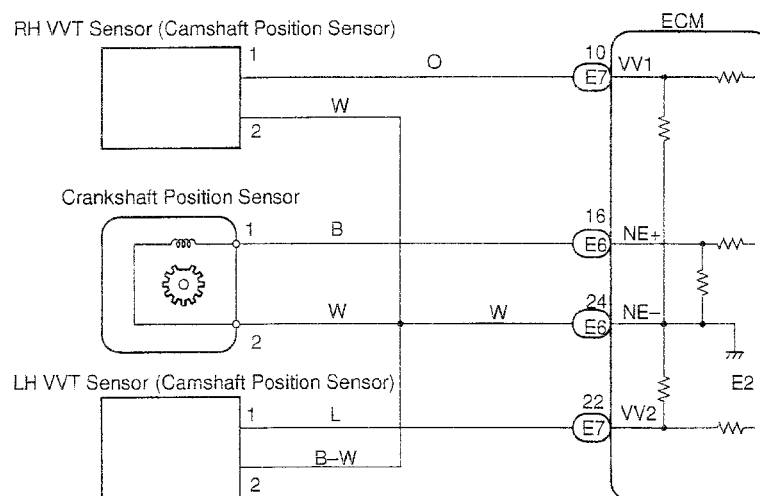


Figure TA117-12 See table for applications

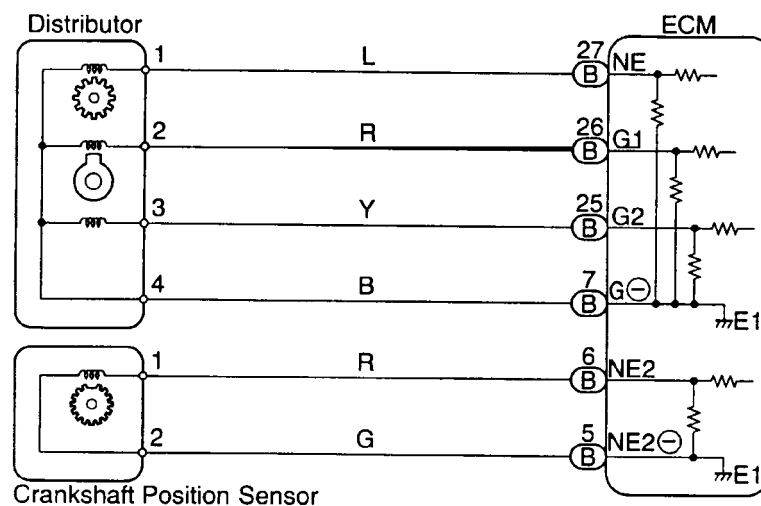


Figure TA117-13 See table for applications

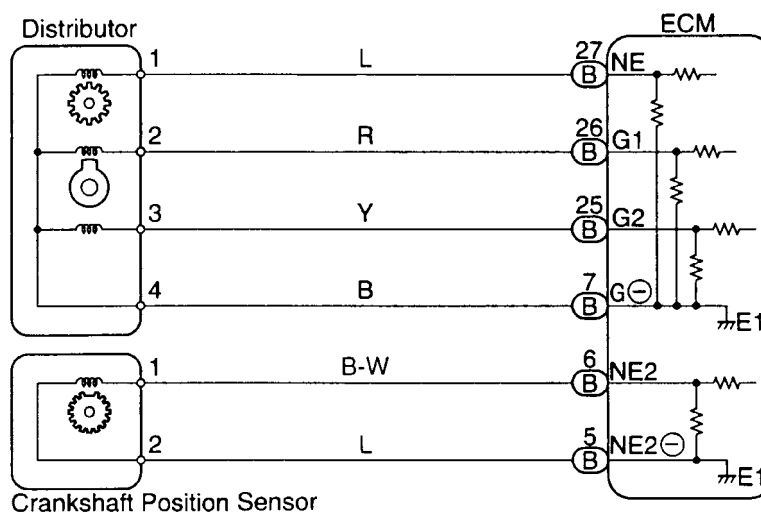


Figure TA117-14 See table for applications

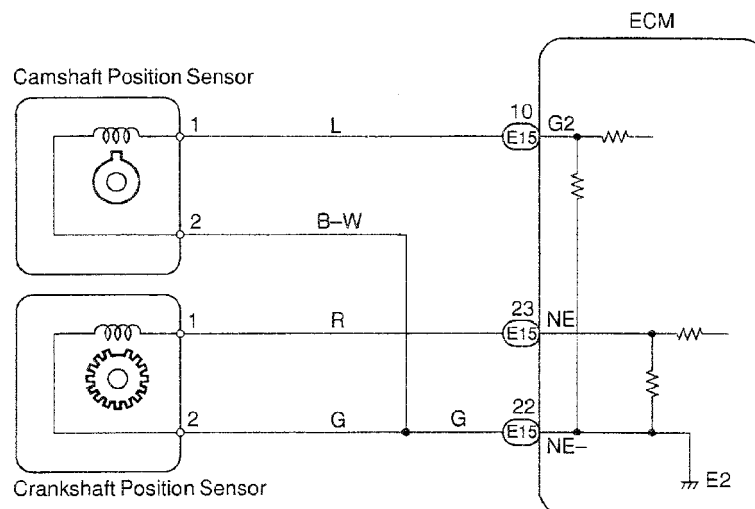


Figure TA117-15 See table for applications

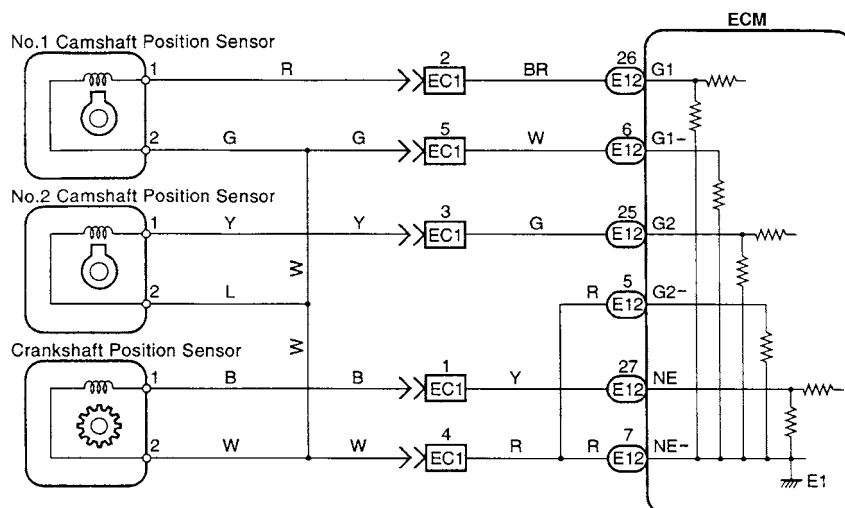


Figure TA117-16 See table for applications

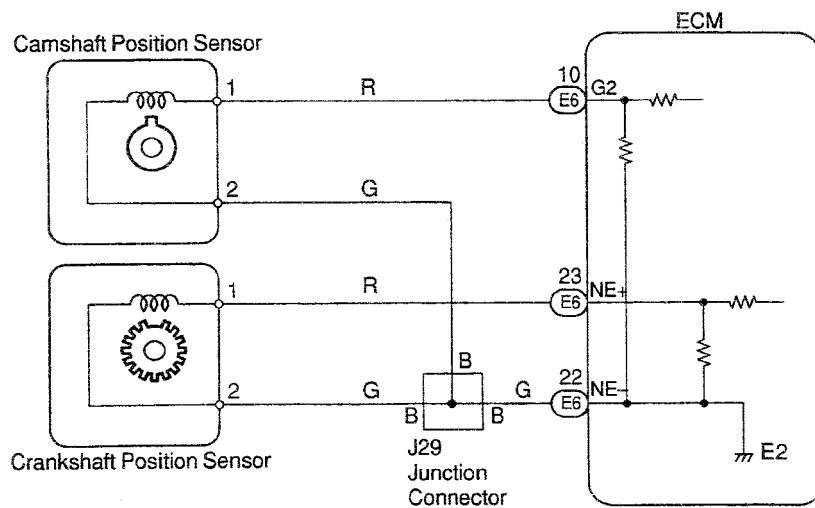


Figure TA117-17 See table for applications

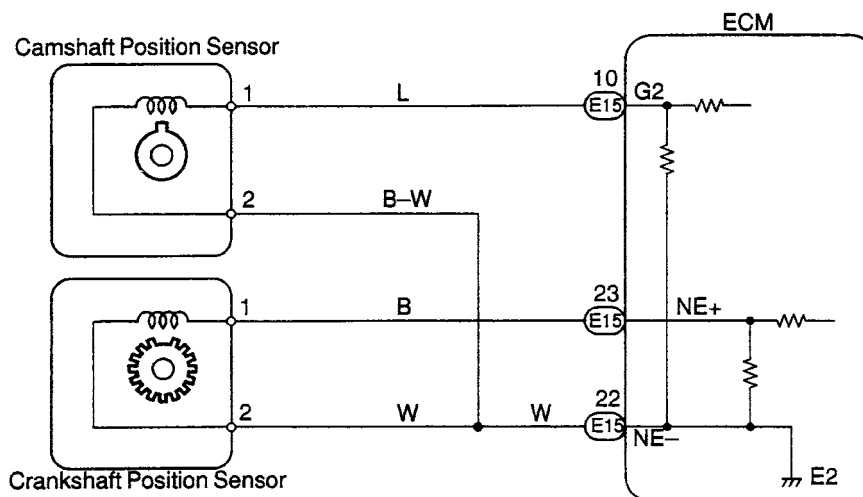


Figure TA117-18 See table for applications

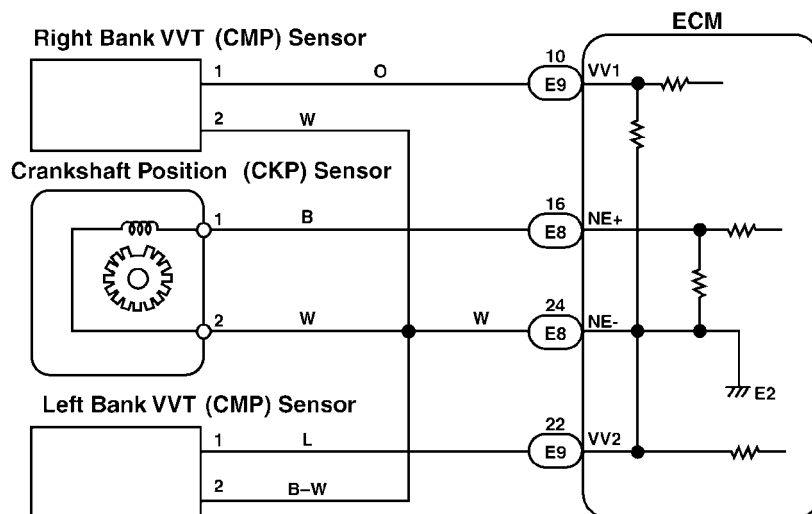


Figure TA117-19 See table for applications

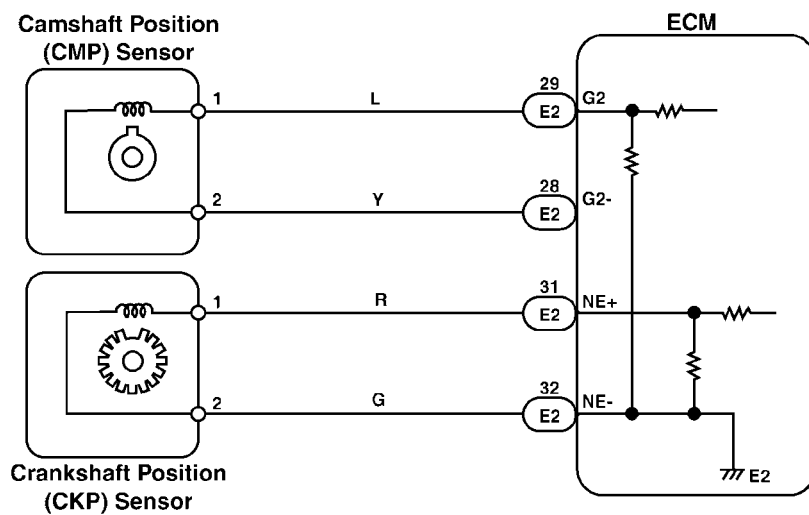


Figure TA117-20 See table for applications

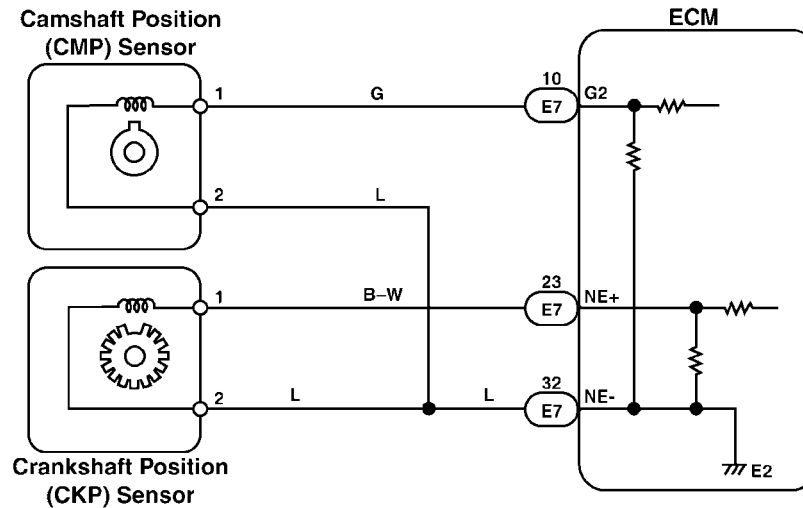


Figure TA117-21 See table for applications

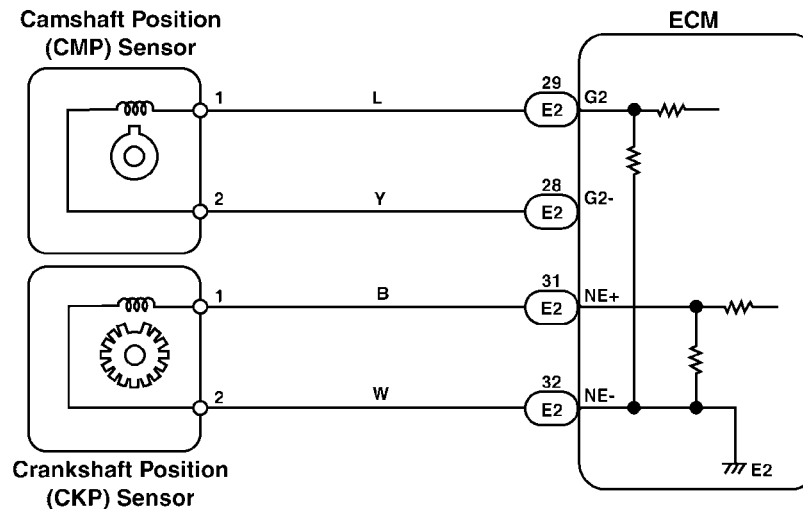


Figure TA117-22 See table for applications

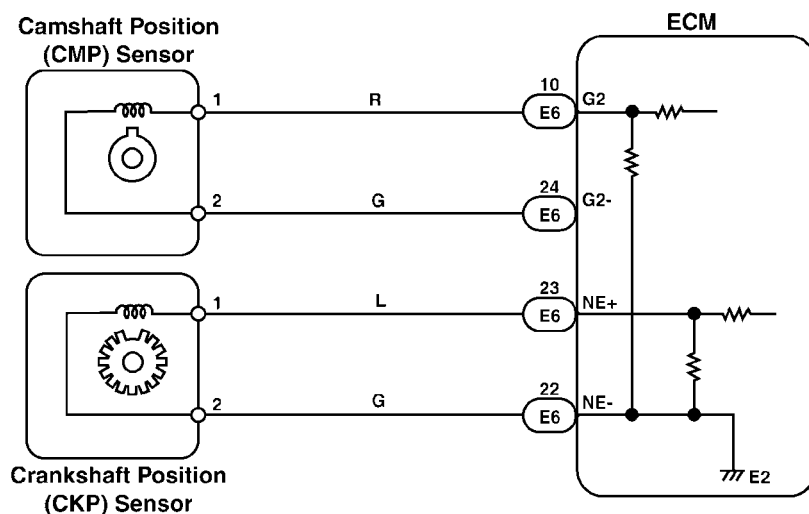
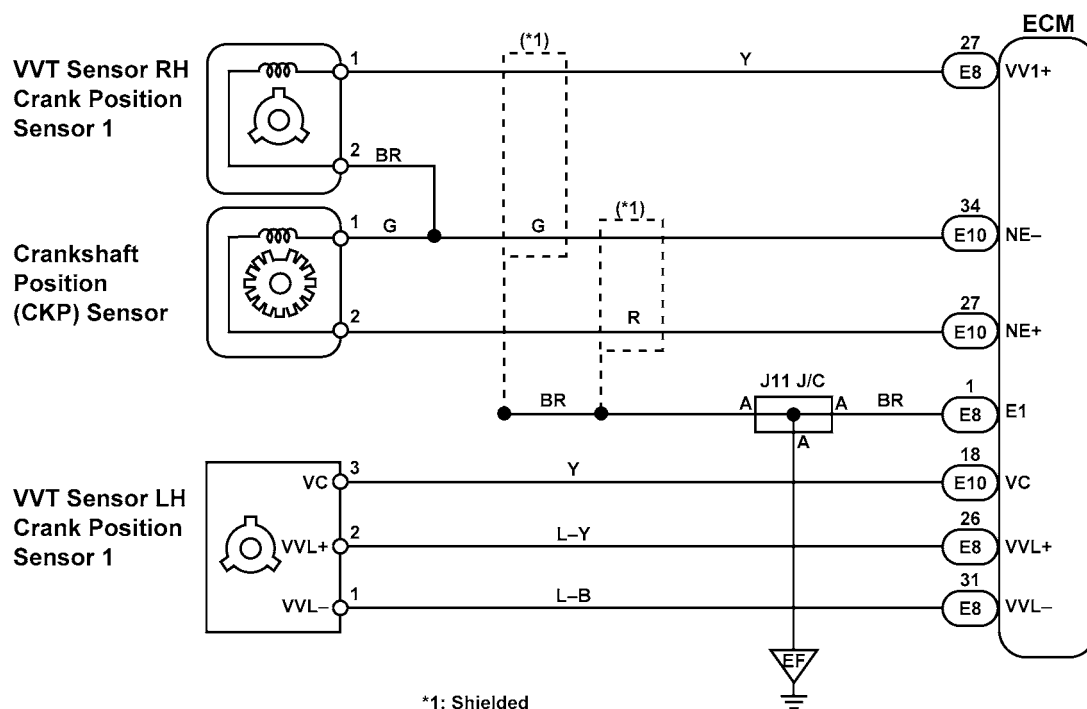


Figure TA117-23 See table for applications



*1: Shielded

Figure TA117-24 See table for applications

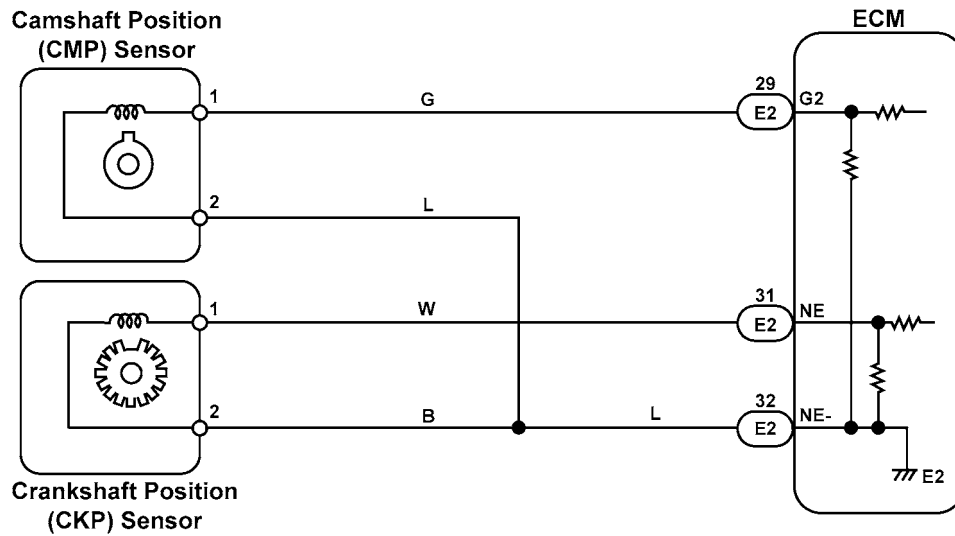


Figure TA117-25 See table for applications

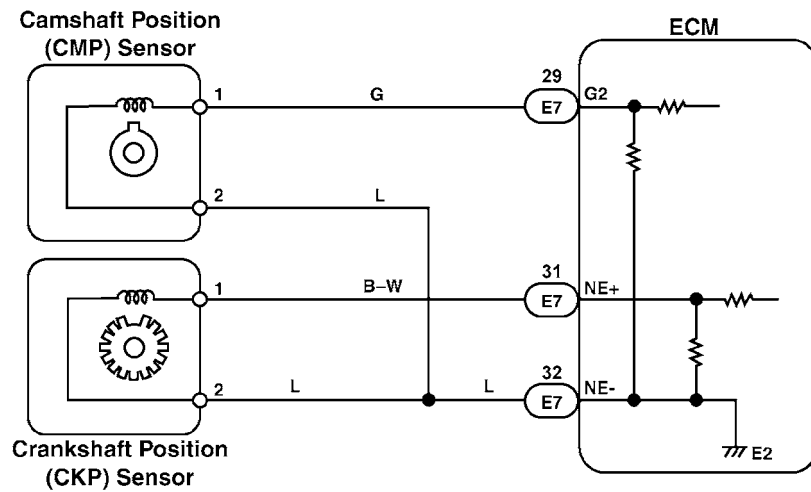


Figure TA117-26 See table for applications

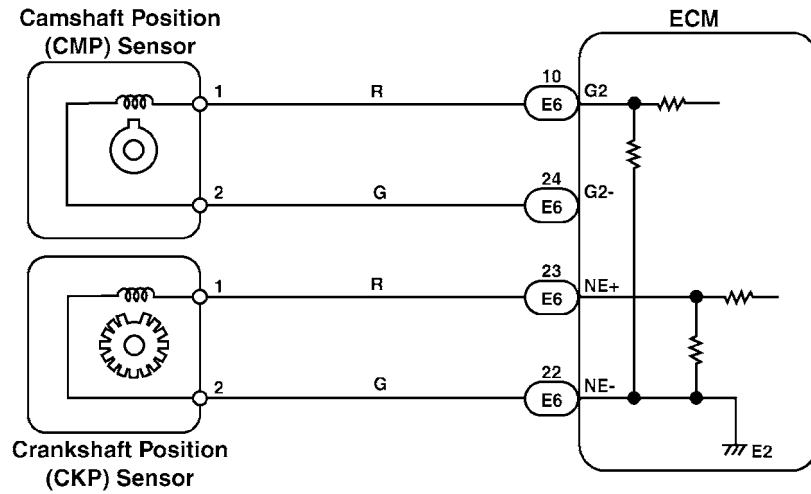


Figure TA117-27 See table for applications

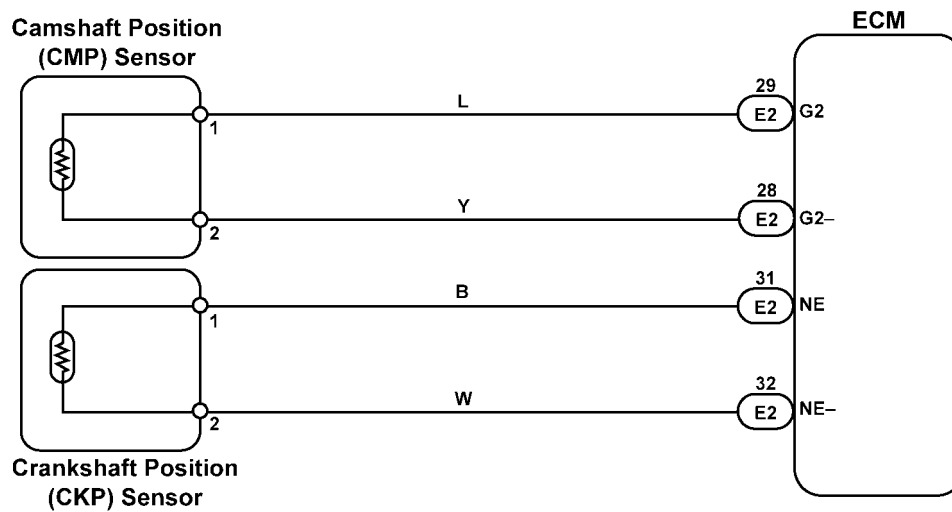


Figure TA117-28 See table for applications

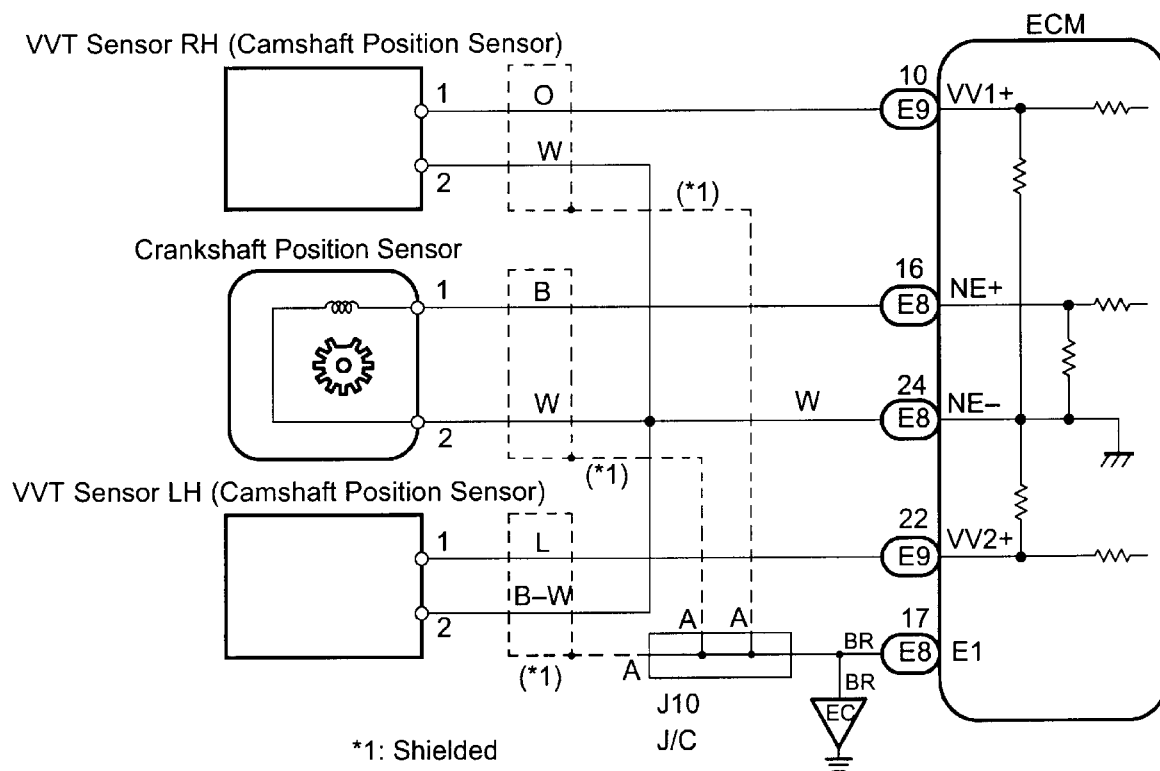


Figure TA117-29 See table for applications

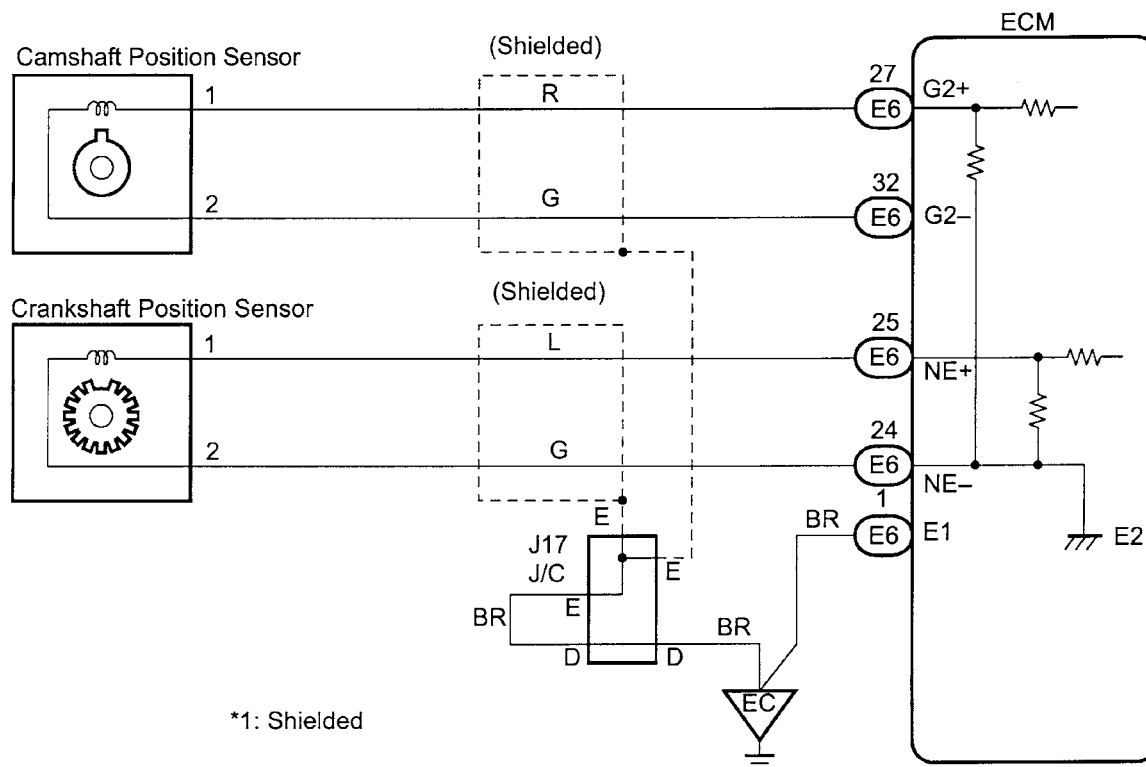


Figure TA117-30 See table for applications

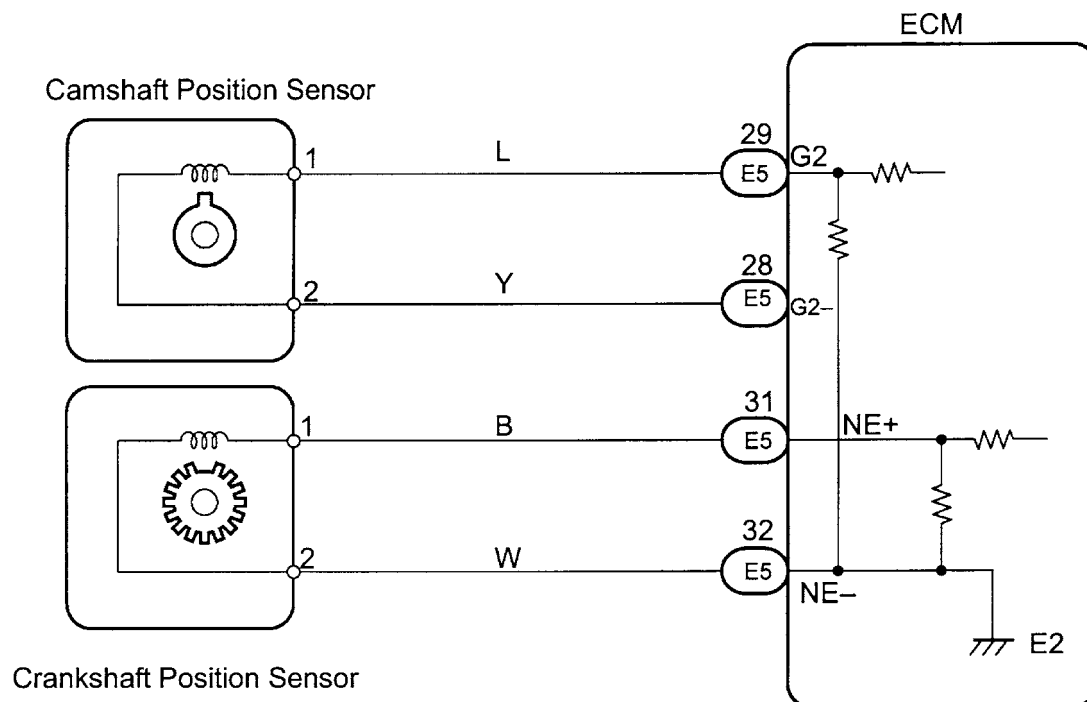


Figure TA117-31 See table for applications

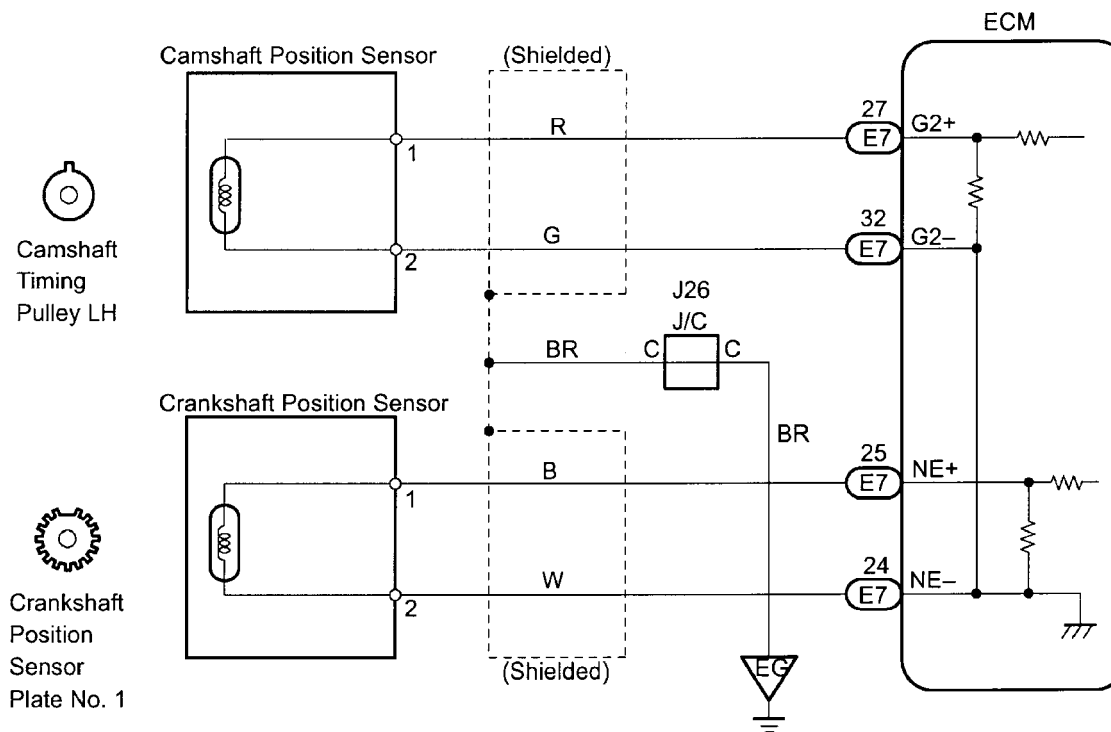


Figure TA117-32 See table for applications

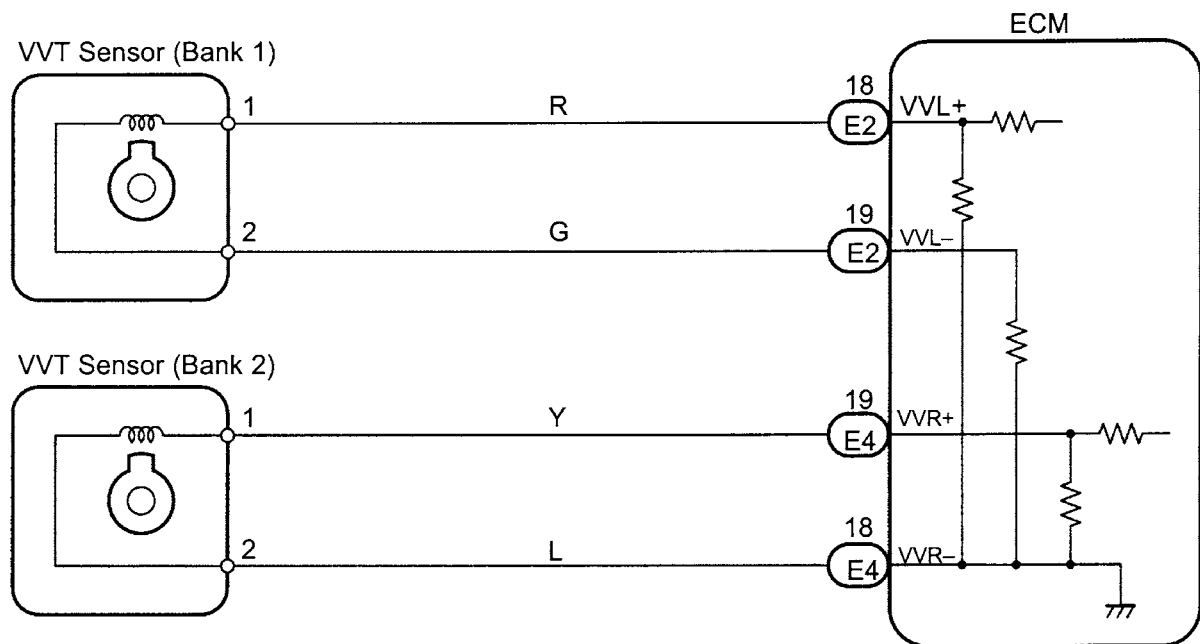


Figure TA117-33 See table for applications